



2012 EBT 08 - Bowltech Aalborg International



Oil Pattern Distance:	38 Feet	Reverse Brush Drop:	32 Feet	Oil Per Board:	40 uL
Forward Oil Total:	14.28 mL	Reverse Oil Total:	9.72 mL	Volume Oil Total:	24 mL
Forward Boards Crossed:	357 Boards	Reverse Boards Crossed:	243 Boards	Total Boards Crossed:	600 Boards

	Start	Stop	Loads	Speed	Crossed	Start	End	Feet	T.Oil
1	2L	2R	5	14	185	0.0	7.9	7.9	7400
2	6L	6R	2	14	58	7.9	11.8	3.9	2320
3	7L	7R	1	14	27	11.8	13.7	1.9	1080
4	8L	8R	1	18	25	13.7	16.2	2.5	1000
5	9L	9R	1	18	23	16.2	18.7	2.5	920
6	10L	10R	1	18	21	18.7	21.2	2.5	840
7	12L	11R	1	22	18	21.2	24.3	3.1	720
8	2L	2R	0	22	0	24.3	35.0	10.7	0
9	2L	2R	0	30	0	35.0	38.0	3.0	0

Navigation: Forward Reverse More

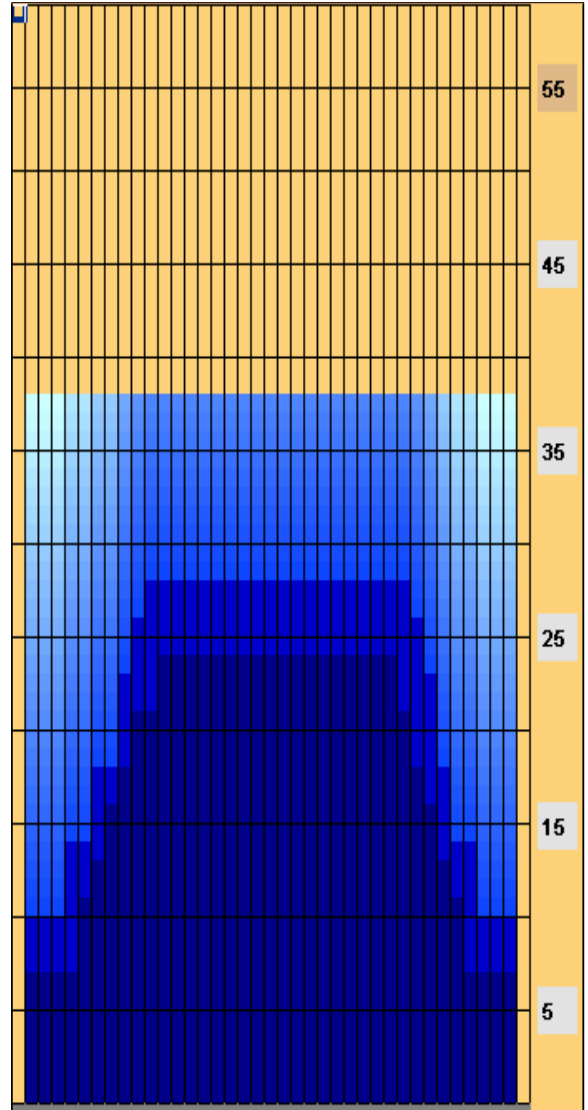
	Start	Stop	Loads	Speed	Crossed	Start	End	Feet	T.Oil
1	2L	2R	0	30	0	38.0	28.0	-10.0	0
2	11L	10R	1	18	20	28.0	25.5	-2.5	800
3	10L	9R	1	18	22	25.5	23.0	-2.5	880
4	9L	8R	2	18	48	23.0	17.9	-5.1	1920
5	7L	7R	2	14	54	17.9	14.0	-3.9	2160
6	5L	5R	2	14	62	14.0	10.1	-3.9	2480
7	2L	2R	1	14	37	10.1	8.2	-1.9	1480
8	2L	2R	0	14	0	8.2	0.0	-8.2	0

Navigation: Forward Reverse More

Conditioner:
Infinity

TransferType:
Transfer Brush

- Forward
- Reverse
- Combined
- Buff



Item	3L-7L:18L-18R	8L-12L:18L-18R	13L-17L:18L-18R	18L-18R:17R-13R	18L-18R:12R-8R	18L-18R:7R-3R
Description	Outside Track:Middle	Middle Track:Middle	Inside Track:Middle	Middle: Inside Track	Middle:Middle Track	Middle:Outside Track
Track Zone Ratio	2.44	1.15	1	1	1.09	2.44

