



Kegel Sport Series - DEAD MAN'S CURVE V2 - 3843



Oil Pattern Distance: 43 Feet **Reverse Brush Drop:** 40 Feet **Oil Per Board:** 50 uL
Forward Oil Total: 18.15 mL **Reverse Oil Total:** 6.7 mL **Volume Oil Total:** 24.85 mL
Forward Boards Crossed: 363 Boards **Reverse Boards Crossed:** 134 Boards **Total Boards Crossed:** 497 Boards

Start	Stop	Loads	Speed	Crossed	Start	End	Feet	T.Oil
1	2L 2R	6	14	222	0.0	9.9	9.9	11100
2	11L 11R	2	14	38	9.9	13.8	3.9	1900
3	12L 12R	3	14	51	13.8	19.7	5.9	2550
4	14L 14R	4	18	52	19.7	29.9	10.2	2600
5	2L 2R	0	22	0	29.9	35.0	5.1	0
6	2L 2R	0	26	0	35.0	43.0	8.0	0

Forward Reverse More

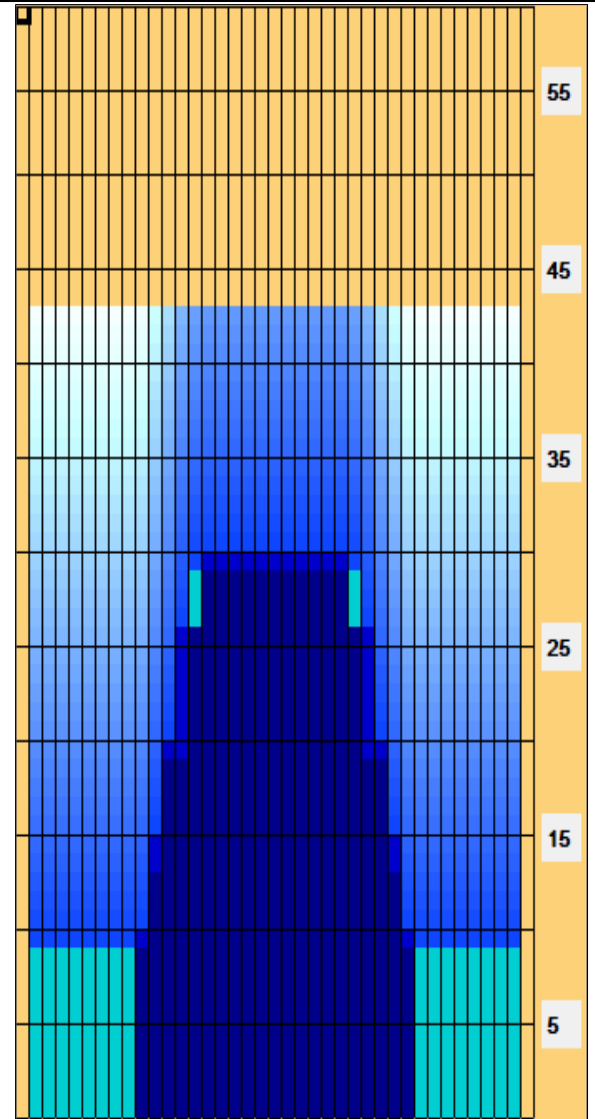
Start	Stop	Loads	Speed	Crossed	Start	End	Feet	T.Oil
1	2L 2R	0	30	0	43.0	30.0	-13.0	0
2	15L 15R	1	26	11	30.0	26.4	-3.6	550
3	13L 13R	2	22	30	26.4	20.2	-6.2	1500
4	12L 12R	2	18	34	20.2	15.1	-5.1	1700
5	11L 11R	2	18	38	15.1	10.0	-5.1	1900
6	10L 10R	1	18	21	10.0	7.5	-2.5	1050
7	2L 2R	0	14	0	7.5	0.0	-7.5	0

Forward Reverse More

Conditioner:
Type In or Select One

TransferType:
Type In or Select One

- Forward
- Reverse
- Combined
- Buff



Item	3L-7L:18L-18R	8L-12L:18L-18R	13L-17L:18L-18R	18L-18R:17R-13R	18L-18R:12R-8R	18L-18R:7R-3R
Description	Outside Track:Middle	Middle Track:Middle	Inside Track:Middle	Middle: Inside Track	Middle:Middle Track	Middle:Outside Track
Track Zone Ratio	3.83	2.5	1.06	1.06	2.5	3.83

