



# Kegel Kode Sport Series - 2235 (40 uL TR)

Oil Per Board: 40 uL      Oil Pattern Distance: 35 Feet      Volume Oil Total: 24.32 mL      Total Boards Crossed: 608 Boards  
 Forward Oil Total: 16.12 mL      Reverse Oil Total: 8.2 mL  
 Forward Boards Crossed: 403 Boards      Reverse Boards Crossed: 205 Boards

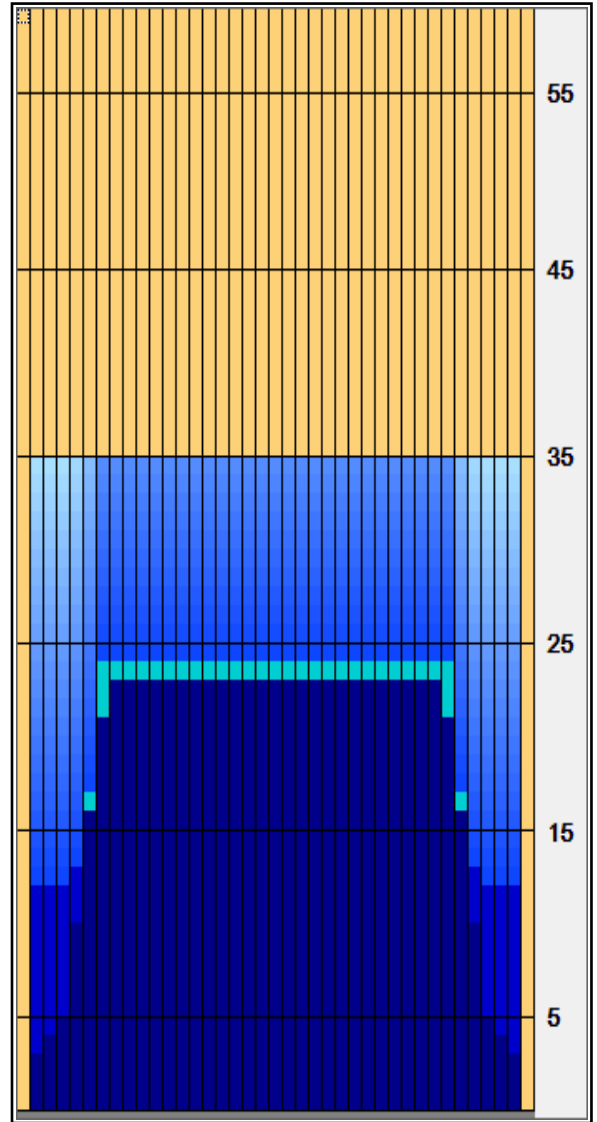
	Start	Stop	Loads	Speed	Crossed	Start	End	Feet	T.Oil
1	2L	2R	2	14	74	0.0	3.0	3.0	2,960
2	3L	3R	1	14	35	3.0	4.0	1.0	1400
3	4L	4R	1	14	33	4.0	5.0	1.0	1320
4	5L	5R	3	14	93	5.0	10.0	5.0	3720
5	6L	6R	3	18	87	10.0	17.0	7.0	3480
6	7L	7R	3	18	81	17.0	24.0	7.0	3240
7	2L	2R	0	22	0	24.0	35.0	11.0	0

Navigation: Forward Reverse More Info

	Start	Stop	Loads	Speed	Crossed	Start	End	Feet	T.Oil
1	2L	2R	0	26	0	35.0	22.0	-13.0	0
2	8L	8R	1	18	25	22.0	20.0	-2.0	1000
3	7L	7R	2	18	54	20.0	15.0	-5.0	2160
4	6L	6R	2	14	58	15.0	12.0	-3.0	2320
5	5L	5R	1	14	31	12.0	11.0	-1.0	1240
6	2L	2R	1	14	37	11.0	10.0	-1.0	1480
7	2L	2R	0	14	0	10.0	0.0	-10.0	0

Navigation: Forward Reverse More Info

Forward Oil  
 Reverse Oil  
 Combined Oil  
 Buff Area



Arrow Zone Ratios

Item	2-5L:16L-20	6-10L:16-20	11-15L:16L-20	16L-20:20-16R	16L-20:20-16R	20-16R:15-11R	20-16R:10-6R	20-16R:5-2R
ul Arrow	210	744	800	800	800	800	744	210
Zone Ratio	3.81	1.08	1	1	1	1	1.08	3.81

Track Zone Ratios

Item	3L-7L:18L-18R	8L-12L:18L-18R	13L-17L:18L-18R	18L-18R:17R-13R	18L-18R:12R-8R	18L-18R:7R-3R
Description	Outside Track:Middle	Middle Track:Middle	Inside Track:Middle	Middle: Inside Track	Middle:Middle Track	Middle:Outside Track
Track Zone Ratio	1.96	1	1	1	1	1.96

